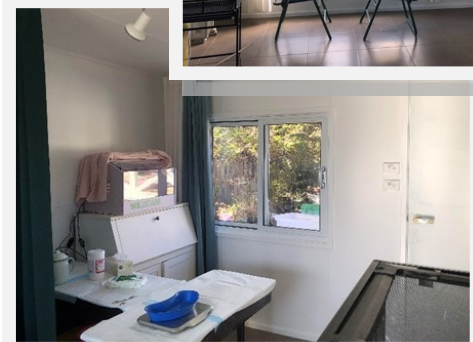
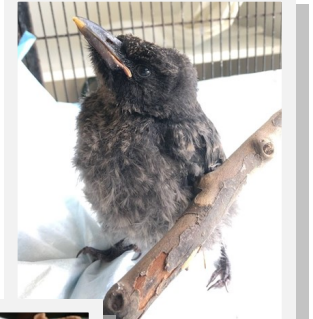


Elizabeth Oliver, Wildcare Queanbeyan

A project to convert an existing detached garage into a dedicated wildlife rehabilitation facility and transport hub for receiving rescued animals, and for transferring animals between carers or rescue groups. This involved pouring a slab to waterproof the base, insulating, lining and flooring the building, adding screened windows and extra wide door, running power to the building, and installing powerpoints and lights.



Grant and Project Impact

The NWC grant provided generous support (\$4000 of the \$17000 budget) for the significant amount of work needed to make the existing structure suitable for wildlife. In the nine months since it has been finished, more than 280 animals have been assessed, treated, cared for or held for transport in this new room. So far this has include:

Reptiles

Blue Tongues,
Cunnighams Skinks and
Eastern Longneck Turtles

Mammals

Possums,
a Wombat,
an Echidna,
Lesser
Longeared
Bats and
Flying Foxes

Birds

Magpies, Currawongs, Ravens, Pee Wees, Crested Pigeons, Eastern Spinebills, Red Wattlebirds, Noisy Miners, a Yellow-faced Honeyeater, Satin Bowerbirds, Tawny Frogmouths, Galahs, Cockies, Corellas, Eastern and Crimson Rosellas, King Parrots, Kookaburras, a Swan and a Hardhead, Black Ducks, Wood Ducks, a Teal Duck and a Greb

Having a quiet, temperature controlled room with flexible space for the large variety of wildlife needing accommodation has made rescuing, assessing, treating, caring and holding for transport much more manageable and efficient. The stress experienced by newly arrived animals is reduced and it better supports carers by extending temporary care periods while transport or ongoing carer are arranged. It has also led to less handling, as uninjured or quickly recovered animals have been able to go directly back for release after a brief stay. All around, the new room has been a very valuable addition to Wildcare's capacity.